



Field plots in Alaska are located over a massive geographic area, so traveling to and from field sites and living in remote locations is a big part of the job. Travel involves a mix of driving, boating, hiking, and flying in helicopters or small aircraft. You will be camping or living in rural Alaska off the road system for extended periods of time.



Visit Workplace Alaska to Apply



Hiring Starts in December & Ends in March
For More Information Please Contact

Hiring Manager

Chris Ferguson
(907)317-3663
chris.ferguson@alaska.gov

Project Coordinator

David Rhodes
(907)799-7511
dave.rhodes2@alaska.gov



State of Alaska Division of Forestry & Fire Protection INTERIOR ALASKA FOREST INVENTORY & ANALYSIS Employment Opportunity

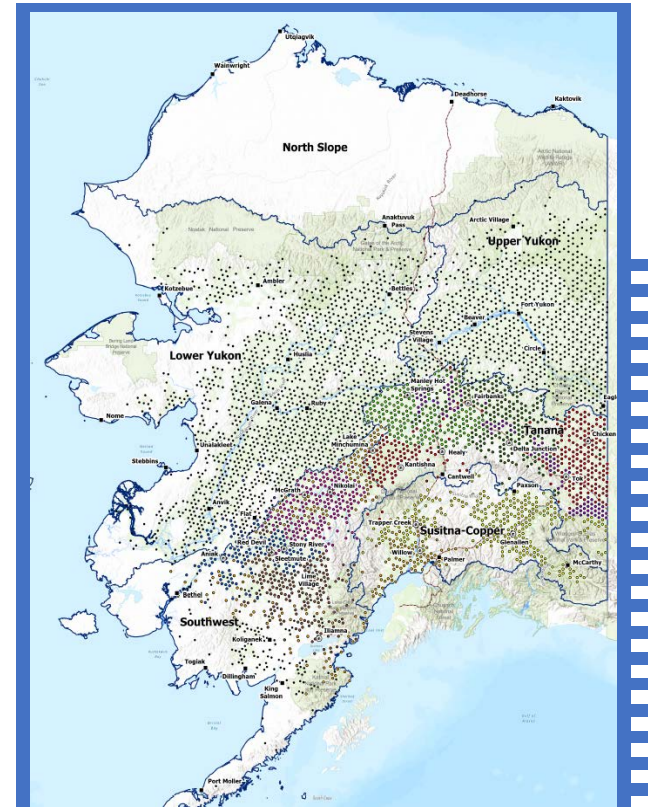


"The Forest Inventory and Analysis (FIA) program has often been referred to as our Nation's Forest Census."

The FIA Program collects, analyzes, and reports information on the status and trends of America's forests. Data is collected on tree diversity and abundance, carbon estimates, tree mortality from fire, disease, or pathogens, removal from timber harvest practices, and also used to track how the landscape is changing over time. This information can be used in evaluating wildlife habitat conditions, assessing the sustainability of ecosystem management practices, and to support planning and decision-making activities by public and private enterprises.



For this job you will be part of a small crew that travels by helicopter and hikes into sites throughout Interior Alaska to install new forest inventory plots and take forest health measurements. You'll get the opportunity to work, monitor and access some of the most remote areas in Alaska. This position offers a chance to gain skills in aviation operations, backcountry navigation, and ecological field measurements. Training in wilderness medicine and aviation as well as wildlife and firearms safety is included.



Interior Alaska FIA Plot Locations

Desired Qualifications

- Well-organized, delegate tasks efficiently, and problem-solve independently
- Alaska backcountry skills (navigation, carry a 45lb backpack over rough terrain)
- Supervisory experience leading field crews in backcountry settings
- Exceptional physical conditioning
- Application of basic scientific principles to collect field data is a plus
- Previous work-related helicopter experience is a plus

