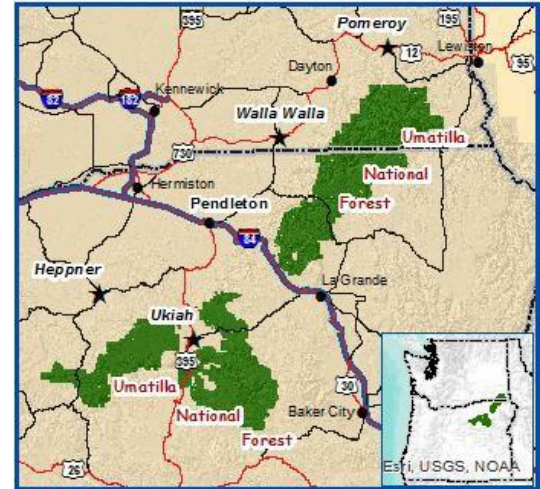


USDA Forest Service
Pacific Northwest Region
Outreach Notice



Umatilla National Forest
GS 9-11 401 Fire Mgt Specialist
Prescribed Fire & Fuels Announcement
****Application Period of January 04 to**
January 18, 2022**

**Fire Mgmt Specialist – Prescribed Fire
& Fuels**



The **Umatilla National Forest** will soon be filling **two** Fire Mgmt. Specialist (listed in the table below), with duty locations of **Heppner, Oregon; or Ukiah, Oregon; Walla Walla, Washington; or Pomeroy, Washington as options for prospective applicants to consider.** The intent is to consider these as zone type positions with one serving our northern two ranger districts Pomeroy and Walla Walla (duty stations of Pomeroy or Walla Walla Washington), while the other serves our southern two ranger districts Heppner and North Fork John Day (duty stations of Heppner and Ukiah, Oregon). This notification is being circulated to inform interested applicants of upcoming opportunities. Please see the following information on the positions and the Umatilla National Forest. When applying to this announcement, please apply to the specific location(s) being offered and correct announcement number at <https://www.usajobs.gov/>.

*****APPLICATION PERIOD FOR THE FOLLOWING POSITIONS*****

The announcement period to apply for these positions is tentatively **January 4 to January 18, 2022**. The table below provides more detailed information about each of these positions.

Listing of Announcements, the Umatilla National Forest will use a single vacancy announcement (SVA) to fill these GS-9/11 Fire Mgmt. Specialists positions during phase 6 of permanent fire hire. Please reach out to the contacts listed below if you are interested in one of these positions. Respondents to the outreach will be provided announcement numbers once they are generated:

Duty Location: Heppner, OR or Ukiah, OR

Vacancies	Position	Announcement Number	Contact
1	Fire Mgmt Specialist GS 9/11	No announcement number currently	Andrew Stinchfield Andrew.stinchfield@usda.gov 541 975 3002

Duty Location: Pomeroy, WA or Walla Walla ,WA

Vacancies	Position	Announcement Number	Contact
1	Fire Mgmt Specialist GS 9/11	No announcement number currently	Andrew Stinchfield Andrew.stinchfield@usda.gov 541 975 3002

IFPM/FSFPM Requirements **Position Requirements:**

These positions exist on a moderate complexity unit and are

an administrative position within an organization having a firefighting mission and is in an established career path. Prior firefighting experience, as gained by substantial service in a primary firefighter position or equivalent experience outside the Federal government is a MANDATORY PREREQUISITE for incumbents of this position.

Both positions are subject to the qualifications and additional required training specified in the [Forest Service Fire Program Management](#) (FS-FPM) Standards.

Pathway One: RX Burn Boss Type2 (RXB2) and Task Force Leader (TFLD) or ICT4

Pathway Two: Prescribed Fire Burn Boss, Type 2 (RXB2) and HEBM

Duties Associated with These Positions

MAJOR DUTIES

Program Management 50%

Provides professional expertise in the development and implementation of multiple resource objectives. Develops fuels treatment alternatives to support management decisions while adhering to applicable laws, regulations, policies, and guidelines. Evaluates individual fuels treatments as well as the effectiveness of the overall program and make recommendations for improvement.

Responsible for the smoke management program to ensure compliance with state air quality standards. Coordinates with federal, state, and local government air quality officials in their development of operational procedures and reporting requirements.

Performs fiscal analysis, formulates the annual fuels management budget, and maintains a system of accounts to track program expenditures. This includes managing the budget from out-year planning to year-end closure.

Coordinates with the next higher organizational level, other agencies, cooperators, and stakeholders to develop interagency fuels strategies. Represents the organization in multi-agency fuels management activities.

Maintains awareness of technological developments in wildland fire science and related disciplines. Collects information through a variety of methods, including field surveys, computer modeling, and specific literature searches. Stays abreast of state-of-the-art computer modeling software and scientific methods to support fire use, air quality, and fuel treatment planning and applications.

Coordinates multi-disciplinary field studies related to fuels management program issues to determine effectiveness of treatments. Coordinates and provides transfer of findings to the appropriate personnel.

Planning 30%

Serves as a member of an interdisciplinary team planning, developing, and implementing land management plans, compliance documents, and agreements. Provides input and recommends strategies for fuels and fire management.

Provides assistance to other resource program managers in the design of fuels management prescriptions and implementation plans. Provides information on fuels management methods to enhance, restore and protect ecosystems.

Participates in the development, review, and modification of the fire management plan. Develops, reviews and monitors fuels management plans. Works closely with other resource specialists to integrate vegetation management project designs in fuels program direction.

Reviews environmental documents, prescribed fire plans, and wildland fire use plans of other agencies and stakeholders which will affect the unit.

Prepares wildland fire risk assessments incorporating wildland/urban interface considerations into all agreements, operating plans, and land and fire management plans, to ensure that all interface areas are covered and state and local responsibilities are apportioned appropriately.

Participates in the development of cooperative agreements to facilitate multi-agency projects.

Operations and Safety 20%

Implements and administers prescribed fire activities, wildland fire use, and fuels management activities to ensure targets are achieved, management objectives are met and mitigation measures are adequate. Monitors fire behavior, evaluates fire effects, identifies potential problems and takes appropriate action.

Designs and implements fuels management surveys to document presence, amount, and types of hazardous fuels. Utilizes the results of the surveys to prioritize prescribed fire and fuels management projects.

Ensures own and other's welfare and safety in all aspects of project implementation. Identifies training needs and participates in prescribed fire and fuels management, and wildland fire and safety training in the techniques, practices, and methods of fire suppression.

Participates in preparedness reviews, proficiency checks and drills, safety sessions, and after action reviews.

May serve as a Contracting Officer's Representative (COR) on fuels management contracts and may be responsible for the preparation of contract specifications and performance measures.

Supports wildland fire suppression activities.

Performs other duties as assigned.

About the Forest:

The Umatilla National Forest consists of four Ranger Districts spanning across northeast Oregon and southeast Washington. The forest is located in the Blue Mountains of NE Oregon and SE Washington; with elevation ranging 1800 to 8000 feet, the forest vegetation ranges from dry open grass/shrub ponderosa pine to cold moist conifer forest.

Each Ranger District is comprised of a District FMO; District AFMO-Operations; District AFMO Fuels; 2 or 3 Type 6 Engines and 1-Handcrew (10 person). The North Fork John Day District also staffs a 20 person Veterans Crew which primary focus is vegetation management projects that foster resilient forest landscapes through projects such as hand thinning and prescribed fire. Annually, approximately 80 fires occur across the forest which predominately occur as a result of periodic thunderstorm events which can produce multiple ignitions. The forest commonly assists other agencies on mutual aid fires, including Oregon Dept. of Forestry, Washington DNR as well as BLM and other forests within the Blue Mountains. The Umatilla also has a proactive integrated vegetation management program which includes mechanical and hand thinning along with landscape scale prescribed fire.

Additional Information on the Umatilla National Forest can be found at: <http://www.fs.usda.gov/umatilla/>

Specific Duty Location Information:

Heppner (Heppner Ranger District)

During the winter months, Fire crews are located at the district office in Heppner. During fire season, fire crews utilize the Tupper Guard Station located approximately 1 hour from Heppner. During this period, field per diem is authorized when staying overnight at the guard station. **No Government Housing is available.**

Heppner is a small community of approximately 1,200 people and is the county seat of Morrow County. It is located approximately 45 miles south of Hermiston (population 14,000) and 65 miles southwest of Pendleton (population 15,000) and is situated in the rolling wheatlands which are foothills to the Blue Mountains. Heppner has one elementary school, one junior high school and one high school. The housing selection is affordable but can be limited. Rentals are limited but can be found. Local services include a hospital and medical clinic, approximately seven churches, a library, a bank, a drug store, as well as other locally owned businesses. Agriculture is the area's primary industry. County services have offices in Heppner. Heppner has a golf course, a swimming pool, soccer field, basketball and tennis courts, ball fields and a reservoir nearby. Approximately 40 miles south on the District is Bull Prairie Reservoir and the Morrow County OHV Park. Snowmobiling is popular in winter and there is a local Nordic club which uses the District for its cross-country skiing activities. Hunting and fishing opportunities are plentiful.

Additional Community Information: <http://www.heppner.net/>

Ukiah, Oregon (North Fork John Day Ranger District)

Fire crews are based out of the district office all year. **Government Housing may be available.** The district has several housing options in Ukiah: multiple bunkhouses on the district compound, a separate housing annex with modular homes, and four RV spots. Availability is limited. Private housing options for purchase or rental are limited in Ukiah.

Ukiah is a small mountain community with a year-round population of 250. The district is considered remote, but the town offers two stores (grocery/hardware), a motel, a laundromat, a cafe, two churches, a tavern, a gas station with eatery, park with tennis court, a post office, and school with grades K-12. There are also two RV parks with full hookups, one offers cabin rentals.

Pendleton (population: 14,400), location of the Umatilla National Forest Supervisor's Office, is 52 miles north on US Highway 395; La Grande (population: 12,300) is 56 miles east on State Highway 244. Many employees live in Pendleton and La Grande and commute daily. **Remote Site Allowance may be available for commuters.** Both Pendleton and La Grande are full-service communities with a reasonable variety of shopping opportunities. There is no government

housing available in either Pendleton or La Grande.

Pomeroy, Washington (Pomeroy Ranger District)

Fire Crews are based out of the District Office all year; **No Government Housing is Available.**

Pomeroy is the only town in Garfield County and is the County Seat. It is a full-service community of approximately 1,250 residents with a hospital/care center, medical doctor and practitioner, dentist, numerous churches, 1 grocery store, mini-mart, 3 banks, a motel, 2 Bed & Breakfasts, 3 eating establishments, 3 card operated gas stations (2 accept cash during regular business hours), pharmacy, hardware store, several small businesses, museum, and a library. Just 30 miles to the east is the - Clarkston Washington- Lewiston Idaho hub that contains any medical and shopping needs an individual might need. There are numerous other large towns within 2 hours or less driving distance such as Spokane, Walla Walla, and Pullman, Washington and Moscow, Idaho.

The public school system in Pomeroy has very good marks for the quality of education provided in grades K-12. There are numerous colleges and universities in the surrounding area such as Walla Walla Community College (with a branch at Clarkston), Walla Walla University and Whitman College in Walla Walla, Lewis and Clark State College in Lewiston, University of Idaho in Moscow, Washington State University in Pullman, and Gonzaga University, Whitworth, Eastern Washington University and Spokane Community College all surrounding Spokane.

Additional Community Information: <http://www.pomeroychamberofcommerce.com/>

Walla Walla, Washington (Walla Walla Ranger District)

During the winter months, the fire crews are located at the District Office in Walla Walla, WA. During fire season, it is common for fire units to be staffed at either Tollgate, Summit or Long Meadow Guard Stations. These locations are approximately 1 to 2 hours from Walla Walla. When staying at these guard stations, Field Per Diem is authorized.

No Government Housing is Available.

The Walla Walla Valley is nestled at the foot of the Blue Mountains, on the sunny side of Washington State. An "oasis in the desert," the valley has an abundance of trees, many of them record trees for the State, and 300 days of sunshine a year. The average annual rainfall is less than 20" per year and there are four distinct seasons. Cultural and community events are more numerous than one would expect in an area of 55,000 people. Whitman College, a prestigious liberal arts and sciences college, maintains a beautiful campus near the downtown of Walla Walla. In nearby College Place, Walla Walla College, operated by the 7th Day Adventist Church is also highly regarded. Walla Walla Community College is an accredited public two-year college that also offers several degree programs in partnership with Washington State University. Together, these institutions offer many options for undergraduate or graduate degrees and contribute to the vitality of the community. Several wineries and vineyards have established in the area in recent years, and more continue to open. There is commercial air service from Walla Walla, and a new airport opened in 2001. Additional flights are available from Pasco, about a 55-minute drive from Walla Walla.

Walla Walla is a full-service community. There is excellent shopping, restaurants, theaters, parks, hospitals, and clinics. The town has a well-developed transit system and great schools.

Additional Community Information: <http://www.wwachamber.com/>

Forest Service employees on the workforce reduction placement system list will receive priority consideration and CTAP/ICTAP candidates will receive the appropriate consideration.

The U.S. Department of Agriculture (USDA) prohibits discrimination on all its programs and activities on the basis of race, color, national origin, gender, religion, age, disability, political beliefs, sexual orientation, and marital or family status. (Not all prohibited bases apply to all programs.) Persons with disabilities who require alternative means for communication of program information (Braille, large print, audiotape, etc.) should contact USDA's TARGET Center at (202) 720-2600 (voice and TDD). To file a complaint of discrimination, write USDA, Director, Office of Civil Rights, Room 326-W, Whitten Building, 14th and Independence Avenue, SW, Washington, DC 20250-9410 or call (202) 720-5964 (voice and TDD). USDA is an equal opportunity provider and employer.

OUTREACH RESPONSE FORM

**Fire Mgmt Specialist
GS-401 9/11 Permanent Full-Time
Duty Station: Four Duty Stations
Available (see body of email)**

Applications are due January 18, 2022 at www.usajobs.gov with announcements forthcoming.

Submittal of this outreach response is optional. Send interest to
Andrew.Stinchfield@usda.gov

Name: _____
Email Address: _____ Telephone No: _____
Mailing Address: _____

For current Forest Service employees:

Agency Employed With: _____
Type of Appointment: Permanent Term Temporary OtherCurrent
Region/Forest/District: _____ Current
Series and Grade: _____ Current
Position Title: _____

If not a current permanent (Career or Career Conditional) employee, are you eligible to be hired under any of the following special authorities?

- Person with Disabilities
- Veteran's Reemployment Act
- Disabled Veteran's with 30% Compensable Disability
- Veteran's Employment Opportunities Act Of 1998
- Returned Peace Corps Volunteer
- Resource Assistant/Public Land Corps Authority
- Other (please specify) _____

Return this form to: Contacts listed by duty station in the body of the outreach by January 3rd, 2022 and indicate in your response which of the duty stations you are interested in pursuing.

Thank you for your interest in our positions.