



OUTREACH NOTICE

ROGUE RIVER-SISKIYOU NATIONAL FOREST

Powers Ranger District



Forester (Timber Sale Preparation)

GS-0460-07/09

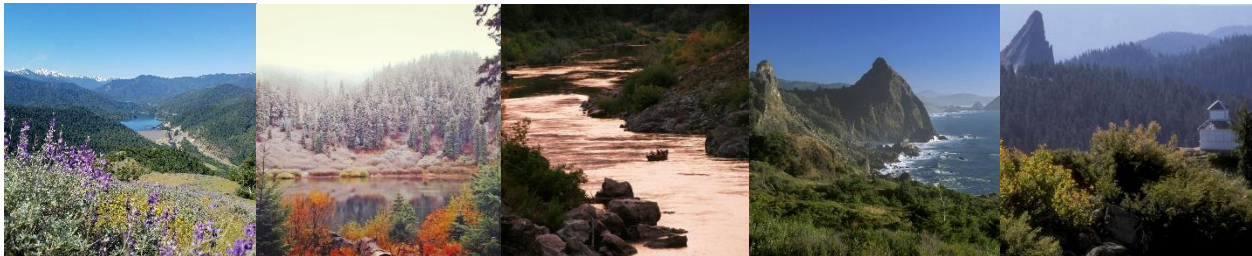
Permanent

The Rogue River-Siskiyou National Forest is conducting outreach to fill a permanent, full-time Forester (Timber Sale Prep) position. This position works for the Powers and Gold Beach Ranger Districts out of Powers, OR.

INTERESTED CANDIDATES: Applications for this position will be accepted through April 3, 2024. Applications that are submitted after April 3rd will not be considered. The Open Continuous Recruitment (OCR) vacancy announcement number for this position is 24-POD3-OCR-0460-FOR-7-9DP. The vacancy announcement can be accessed through the [USAJOBS Website](#).

If you have questions about the position, please contact Anna Sweeney at (541) 425-6117, or via email at anna.sweeney@usda.gov.

The purpose of this Outreach Notice is to inform prospective applicants of an upcoming opportunity. Please help us reach out to quality candidates by sharing this opportunity with anyone who might be interested.



About the Position

This position works with other foresters and technicians on the zoned Powers, Gold Beach, and Wild Rivers Ranger Districts to prepare Forest Service timber sale and stewardship contracts to implement forest treatments with commercial logging. This position would be a project lead, responsible for overseeing timber sale contract preparation.

This work involves:

- Logging systems layout and design (skyline, tractor, conventional, and helicopter)
- Overseeing/developing the marking guides and timber cruise
- Coordinating with specialists to meet resource objectives and protect sensitive resources
- Preparing field maps
- Organizing project data and tracking project progress
- Identifying treatment boundaries
- Mapping units with high accuracy GPS units
- Tree marking
- Measurement of trees to calculate timber quality, defect, and volume.
- Other resource or fire duties as qualified and assigned.

Some travel will be required for this position.

Powers and Gold Beach Ranger Districts (Zoned)

Located in southwestern Oregon, the Powers and Gold Beach Ranger Districts offer amazing, year-round recreation, including five wild and scenic rivers, over 200 miles of hiking trails, five federally designated wilderness areas, and a range of camping opportunities from the highly developed campgrounds along the lower section of the Rogue River to dispersed campsites deep in the Kalmiopsis Wilderness. Both Districts encompass about 700,000 acres of National Forest System lands.

The Siskiyou area embodies the most complex soils, geology, landscape, and plant communities in the Pacific Northwest. World-class wild rivers, biological diversity, remarkable fisheries resources, and complex watersheds define the Siskiyou. The Rogue River-Siskiyou National Forest is the most floristically diverse National Forest in the country with some extraordinary botanical resources. A few well know “special” species are *Darlingtonia (cobra lily)* and coastal redwood trees.

This area is unique in habitat for some special status species (Chinook salmon, Coho salmon, northern spotted owls, marbled murrelet, mardon skipper, red tree vole) as well as species which are popularly hunted or fished (black-tailed deer, elk, steelhead). Along with hunting and fishing, wildlife and plant viewing are other popular activities.

The districts have an active timber sale program, selling about 8-20 MMbf per year. This volume comes primarily from thinning managed plantations and thinning in natural stands. Primary harvest species include Douglas-fir and western hemlock. Logging systems are often complex because of variable topography, soils, and many streams.

Be prepared for steep, rugged, and beautiful country!

The climate is typical of southwestern Oregon-mild, moist winters and warm dry summers with summer temperatures ranging from the 70's to the 90's. Rainfall averages 63 inches per year

Rogue River-Siskiyou National Forest Outreach
“Caring for the Land and Serving the People”

from October to June. Snow is normal on the district during the winter and usually occurs at 1,000 feet and higher elevations. The topography ranges from moderate slopes to steep, rugged slopes. Small drainages, ridges, bluffs, and waterfalls are abundant.

In general, the Districts support excellent stands of old-growth and mature second growth Douglas-fir in association with western hemlock, Port-Orford-cedar, western redcedar, true firs, and many species of hardwoods. The Districts also host a variety of ground vegetation and brush species, including pacific rhododendron, salal, sword and bracken fern, manzanita, and huckleberry.

Southern Oregon's Glendale to Powers Bicycle Recreation Area is a 74-mile paved bicycle route that begins in Glendale and leads the rider through some of the most breath-taking scenery in Southern Oregon.

Powers Area Information

Powers is in the southwestern corner of Oregon, approximately 75 miles west of I-5 and 50 miles east of the Pacific coast. It is nestled in a valley ringed by steeply forested mountains of the Coast Range, and retains the close-knit, small-town character of a Pacific Northwest logging community. Powers is a small community of about 750 people. The town's elevation is approximately 300 feet. It is 21 miles to the next nearest town which is Myrtle Point and 30 miles from the Coos County seat, Coquille.

Principal industries include timber, ranching and recreation. The road south follows the South Fork of the Coquille River entering the Rogue River - Siskiyou National Forest 4 miles from town. The nearest medical facility is the Myrtle Point Medical Center, in Myrtle Point, Oregon and the closest hospital is in Coquille, Oregon.

Services in Powers include a store and cafe. Childcare facilities are not available. There are several churches in local communities. The school system consists of a grade school (grades K-6) and a high school (grades 7-12). Southwestern Oregon Community College is in North Bend, 53 miles away. Local housing rentals average \$1000 per month, when available. Housing purchases start at approximately \$250,000.

There are several points of interest on the Powers Ranger District including Big Tree (the world's largest Port Orford-cedar), five year-round campgrounds, and three Wilderness areas. The District is well known for its tremendous salmonid fisheries and wide range of wildlife species.

The area around Powers offers excellent opportunities for outdoor recreation. Deer and elk hunting are excellent, as is salmon and steelhead fishing in the Elk River, Sixes River, and the South Fork of the Coquille River. The world-famous Rogue River is approximately 35 miles south of Powers via the Agness Road. Powers County Park is located 3/4 miles north of Powers. It has tennis, basketball, and volleyball courts; a baseball field; fishing; boating (electric trolling motors permitted); camping and RV spaces with water and electrical hookups; and picnic shelters with water and electrical facilities.



About the Rogue River-Siskiyou National Forest

The Rogue River-Siskiyou National Forest covers 1.8 million acres in southwest Oregon and northwestern California, primarily in the watershed of the Rogue River. Located in southwest Oregon, along the California/Oregon state line and bordering the Klamath National Forest to the south, the Fremont-Winema Forest to the east and the Umpqua National Forest to the north, the Rogue River-Siskiyou National Forest ranges from the crest of the Cascade Mountains west to the Siskiyou Mountains and nearly to the Pacific Ocean. The Rogue River-Siskiyou National Forest covers almost 1.8 million acres and is unique in its botanical diversity, largely due to the bisection of the South Cascades and Siskiyou Mountain Ranges.

The Forest is also home to an incredible abundance of Wild and Scenic Rivers (over 200 designated miles among the Rogue, Chetco, Illinois, Elk and Smith Rivers), seven wilderness areas (350,000 acres), outstanding fisheries and wildlife resources and ruggedly breathtaking landscapes of mountains, rivers, and lakes with occasional meadows.

The Rogue River National Forest (until 1932 called the Crater National Forest) was established by President Theodore Roosevelt in 1908. The name Rogue River commemorates the Takelma Indians, whose defense of their homeland led early day French-Canadian trappers to call them les Coquins, "the Rogues." The Siskiyou Forest Reserve was established by President Theodore Roosevelt in 1905, and the Reserve was designated as the Siskiyou National Forest in 1907. The name Siskiyou is a Cree Indian word for bob-tailed horse (bestowed in 1828 by French Canadians working for the Hudson Bay Company).

Rogue River-Siskiyou National Forest Outreach
"Caring for the Land and Serving the People"

The Forest itself is composed of two distinct geological provinces – the Cascade Range and the Siskiyou Mountains. The Cascade Range is dominated by snowcapped volcanic peaks such as 9,495- foot Mt. McLoughlin located within the Sky Lakes Wilderness on the High Cascades Ranger District. The Siskiyou area embodies the most complex soils, geology, landscape, and plant communities in the Pacific Northwest. The Rogue River-Siskiyou is the most floristically diverse National Forest in the country with some extraordinary botanical resources. The unique character of the landscape has led to the designation of over 340,000 acres of the Forest as wilderness. Wilderness areas managed all or in part by the Forest include: Sky Lakes, Rogue-Umpqua Divide, Red Buttes, Kalmiopsis, Siskiyou, Wild Rogue, Grassy Knob and Copper Salmon. National Wild and Scenic Rivers include: Upper Rogue, Illinois, North Fork Smith, Chetco, Elk, and Rogue.

The Forest Supervisors office is co-located with the Medford District of the Bureau of Land Management in Medford, OR and is adjacent to the Rogue Valley International Airport. The Forest administers five ranger districts. On the west side of the forest, the Gold Beach Ranger District office is in Gold Beach and the Powers Ranger District office is in Powers. On the east side of the Forest, the Siskiyou Mountains Ranger District office is in the community of Star in the Applegate Valley; the High Cascades Ranger District office is co-located in Prospect and Butte Falls; and the Wild Rivers Ranger District is co-located in Cave Junction and in Grants Pass at the Grants Pass Interagency Office.

The forest leadership team manages a large and complex resource management program, including over 2 million recreation visitors per year, 30 to 40 MMBF of timber harvest per year and a significant wildlife and fisheries programs recognized for collaborative aquatic restoration projects. Several volunteers and partners associated with forest collaborative and restoration work have received national and regional recognition for their efforts. Natural resource management interest is high in the local and diverse rural and urban communities, representing opposing ends of the socio-political spectrum, from environmental advocacy groups to historically active mining communities.

The large natural resource program requires an extensive forest infrastructure, consisting of approximately 5,500 miles of roads, 133 road bridges, over 1,500 miles of trails, 326 developed recreation sites including the Mount Ashland Ski Area, 9 major administrative sites, including the Medford Air Tanker Base, the Siskiyou Rappel Base, and the J. Herbert Stone Nursery, one of the largest nurseries in the nation.

For additional Rogue River-Siskiyou National Forest information, click [here](#).

The U.S. Department of Agriculture (USDA) prohibits discrimination in all its programs and activities on the basis of race, color, national origin, age, disability, and where applicable, sex, parental status, religion, political beliefs genetic information reprisal, sexual orientation, marital status, family status, or because all or part of an individual's income is derived from any public assistance program. (Not all prohibited bases apply to all programs.) Persons with disabilities who require alternative means for communication of program information (Braille, large print, audiotape, etc.) should contact USDA's Target Center at (201) 720-2600 (voice and TDD). To file a complaint of discrimination, write USDA Director, Office of Civil Rights, 1400 Independence Avenue, S.W., Washington DC 20250-9410 or call (800) 795-3272 (voice) or (201) 720-6382 (TDD). USDA is an equal opportunity provider and employer.

REASONABLE ACCOMMODATION: The USDA Forest Service provides reasonable accommodation to applicants with disabilities. If you need a reasonable accommodation for any part of the application and hiring process, please contact the point of contact listed on the Outreach Notice. The decision on granting reasonable accommodation will be made on a case-by-case basis.

THANK YOU FOR YOUR INTEREST IN THIS VACANCY

*Rogue River-Siskiyou National Forest Outreach
"Caring for the Land and Serving the People"*